

Bonner Chip Plant

Willis Enterprises Inc.

Rich Lane

richlanemissoula@gmail.com

The sun has not set on Montana's “Keepers of the Forests”




Somehow, often without any visible means of support, our industry holds together & often thrives





Opportunity

NEXT EXIT 

We don't want material used for posts
& rails – too valuable



We want Pulp Wood (non-saw)
of all species - except for cedar and
hardwoods



And we do like discarded tops



But can't take black or burned trees



Not in love with real old slash



Harvest & Removal of Pulp Trees reduces forest fuels & fire intensity



And minimizes slash pile burning



Improves outdoor recreational opportunities



Improves elk habitat for elk



Bunch Grass Winter Range on BCCA



Early-Summer Range on Kleinschmidt Flats

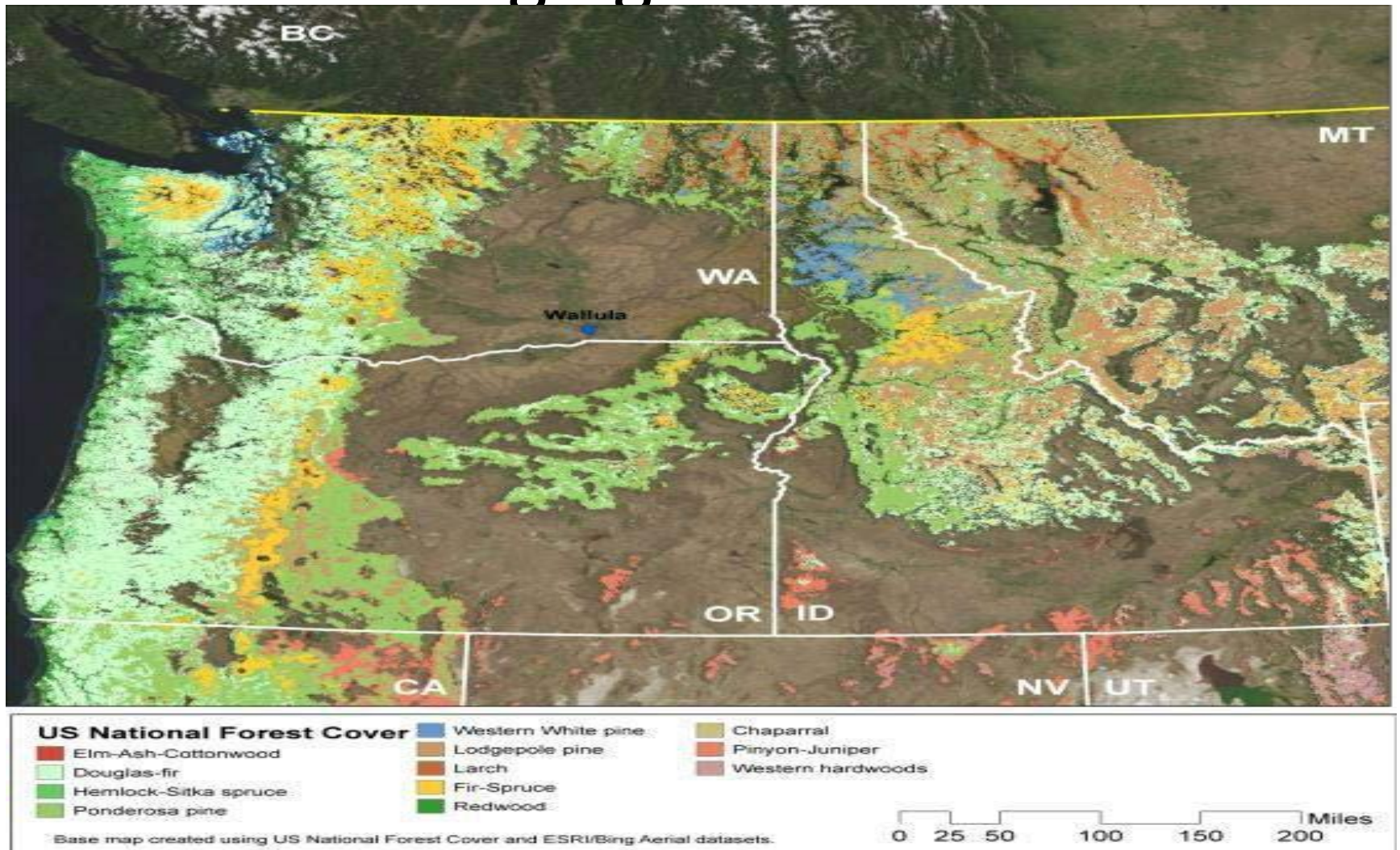


Our Customer

Boise Paper – Wallula, WA



Eastern Washington Challenging Wood Basket





Lined up...in & out in 10 minutes!!



The drum-debarker



Chipper will handle 27" logs



Log loader unloads 60 trucks each day,
and still keeps logs to the chipper deck



Chipper consumes 35 truck loads of pulpwood each day to make 60 cars of high quality chips every week



All cars are netted & MRL provides
service 5 days per week



Governor's Award for Excellence “Use & Promotion of Montana Wood”



Wave when you see this plate!



Questions/Comments??

